

RS 2000

RAD • SOURCE

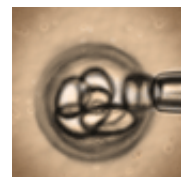
Biological Irradiator Small Animal and Cell Irradiation



- Direct replacement for cesium-137 and cobalt-60 irradiators
- Is self-contained and requires no external cooling system
- Excellent for small animal irradiation with a dose rate ~ 1.2 Gy/min



- Patented RAD+ technology allows for a dose uniformity of 94%
- The RAD+ also allows for the irradiation to occur in a filtered environment eliminating cross-contamination issues



- For cells, dose rate ranging 5 - 10 Gy/min
- Currently in use at some of the finest public and private research institutions worldwide

Rad Source Technologies, Inc.
480 Brogdon Suite 500
Suwanee, GA 30024, USA

866.301.3986 or +1 678.765.7900
www.radsources.com

**REASONS WHY THE
RAD SOURCE RS 2000 X-RAY IRRADIATOR
IS THE SYSTEM OF CHOICE FOR YOUR
RESEARCH AND BIOLOGICAL IRRADIATION REQUIREMENTS**

The **RS 2000 (now CE marked)** is a research & biological irradiator that features the following advantages:

- **Self-contained** and **requires no external cooling** system
- **NO Nuclear Site License** or secure/shielded room is needed
- **Is ideal for small animal research** when using our patented **RAD + reflective cage enclosure**. This unique and patented feature provides for a dose rate within the cage of ~1.2 Gy/min (120 rads/min or the same as gamma irradiator) and the dose distribution is better than 94% across the entire field (much better than a gamma irradiator). The **RAD+** is designed to hold one standard Allentown filtered rearing cage. (Three are supplied with the system.) This feature improves animal husbandry by allowing transport and irradiation of the animals inside a filtered environment mitigating cross-contamination issues. Because the animals are irradiated in their cage, multiple mice can be irradiated during one cycle. **If it is important for you to have reproducible results that equate to the irradiation standard of Cesium - the only choice is the RS 2000** with .3mm of Copper filter irradiating at 160 kV AT 25 mA (225 kV is optional).
- Works **great for targeted tumor irradiation** using an optional targeted Irradiation Kit. The kit includes various shields for isolating the beam to specific areas of the target. The kit includes two (2) restrainers, left flank, right flank, dual flanks, whole body and head shields.
- For **Cells** and other research the RS 2000 has dose rates of >5 Gy/min (500 rads/min) filtered and up to >17 Gy/min unfiltered
- **Allows for 160 kV operation at 25 mA** (not “AND or OR” but AT 25 mA)
- **“Plug and Play” installation**: install, dose-mapping, & in-service in one day
- **Mounted on wheels** with a footprint of 33” X 42” (82.8 cm X 106.7 cm) and weighs 1250 lbs (567 kg)
- **Simple touch screen operators’ panel** for ease of use and operation
(NEW – Now with data logging capabilities – NEW)

Rad Source is the recognized expert in the field of X-ray irradiation. Rad Source developed the only US-FDA approved X-ray blood irradiator for **replacing Cs-137 irradiators**.

The RS 2000 should be the choice for your next professional quality biological and research irradiator

Please review the information on our website: www.radsorce.com